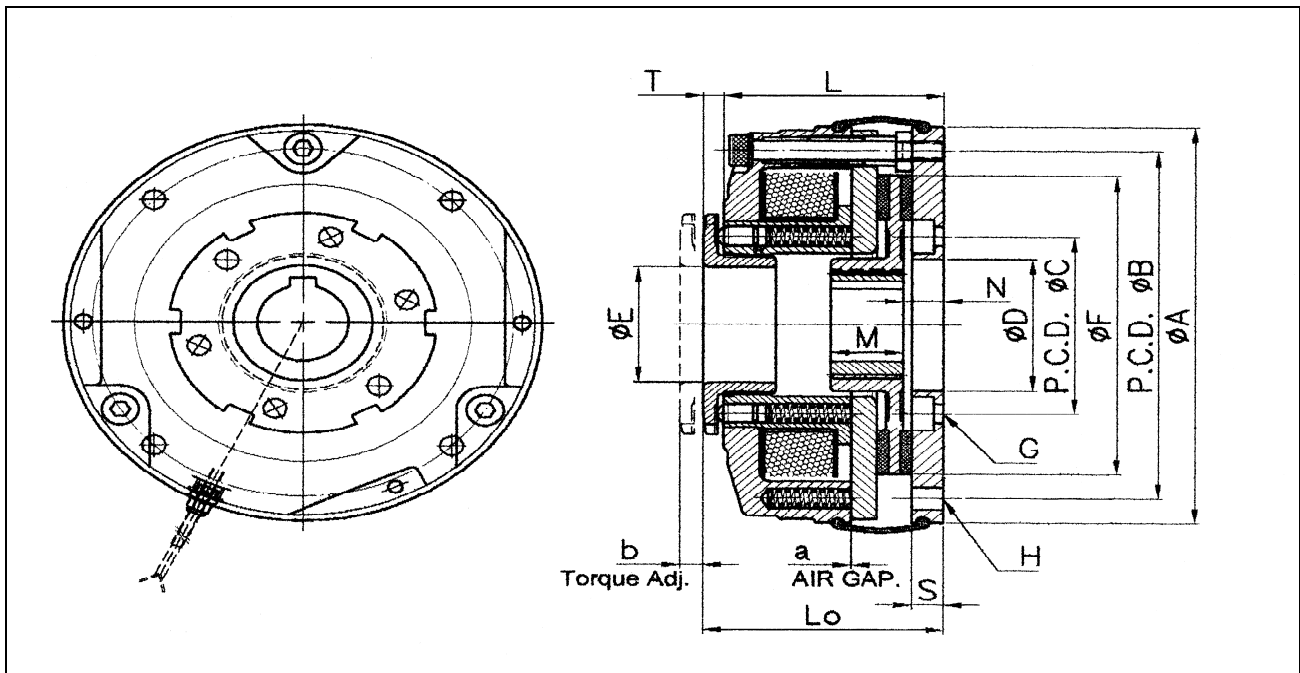


Dimensions Sheet



Unit in mm

Type SAB	2	5	10	20	40	60	100	160	250	400
Dynamical ²⁾ [Nm]	2	5	10	20	40	60	100	160	250	400
Hub bore ¹⁾ d_{max}	10	14	15	20	24	28	35	45	55	70
Hub bore d_{min}	8	8	10	10	16	20	25	30	35	40
ϕA	73	84	102	127	147	162	188	215	252	302
ϕB	60	72	90	112	132	145	170	196	230	278
ϕC	x	30	45	56	62	74	84	100	120	150
ϕD	25	20	30	40	45	55	65	75	90	120
ϕE	27	19	24	35	40	48	55	62	73	90
ϕF	49	61	76	96	115	125	150	175	208	254
G	x	3xM4	3xM5	3xM6	3xM6	3xM8	3xM8	3xM8	6xM8	6xM10
H	3x $\phi 4.5$	3x $\phi 4.5$	3x $\phi 5.8$	3x $\phi 7.0$	3x $\phi 7.0$	3x $\phi 9.0$	3x $\phi 9.0$	6x $\phi 9.0$	6x $\phi 11$	6x $\phi 11$
L	42.5	44	49	59	66	76	85	95	109	120
M	16	18	20	20	25	30	30	35	40	50
N	8	8	9.5	12.5	12	14	14.5	15	15	20
S	5.8	5.8	6.8	8.8	8.8	11	11	11	11	14
T	0	5	6	6	7	7	8	9	10	13
Lo	x	49	55	65	73	83	93	104	119	133
b	x	5	5	7.5	9.5	11	10	15	17	20
Air gap a	0.2	0.2	0.2	0.2	0.3	0.3	0.3	0.4	0.4	0.5
Air gap a_{max}	0.5	0.5	0.5	0.6	0.8	0.8	0.8	1	1	1.2
Weight [kg]	1	1.2	1.8	3	4.8	7.3	12.2	18.5	27.6	35.9
Micro-switch	No	No	No	No	No	Yes	Yes	Yes	Yes	Yes

1) Standard parallel keyway accordance to DIN 6885/1 P9.

The Hub bore tolerances is ISO H7. Recommended ISO shaft tolerances up to $\phi 50$ mm = k 6 Over $\phi 50$ mm = m 6.

2) Braking torque dynamical ($\Delta n = 100$ r.p.m.)