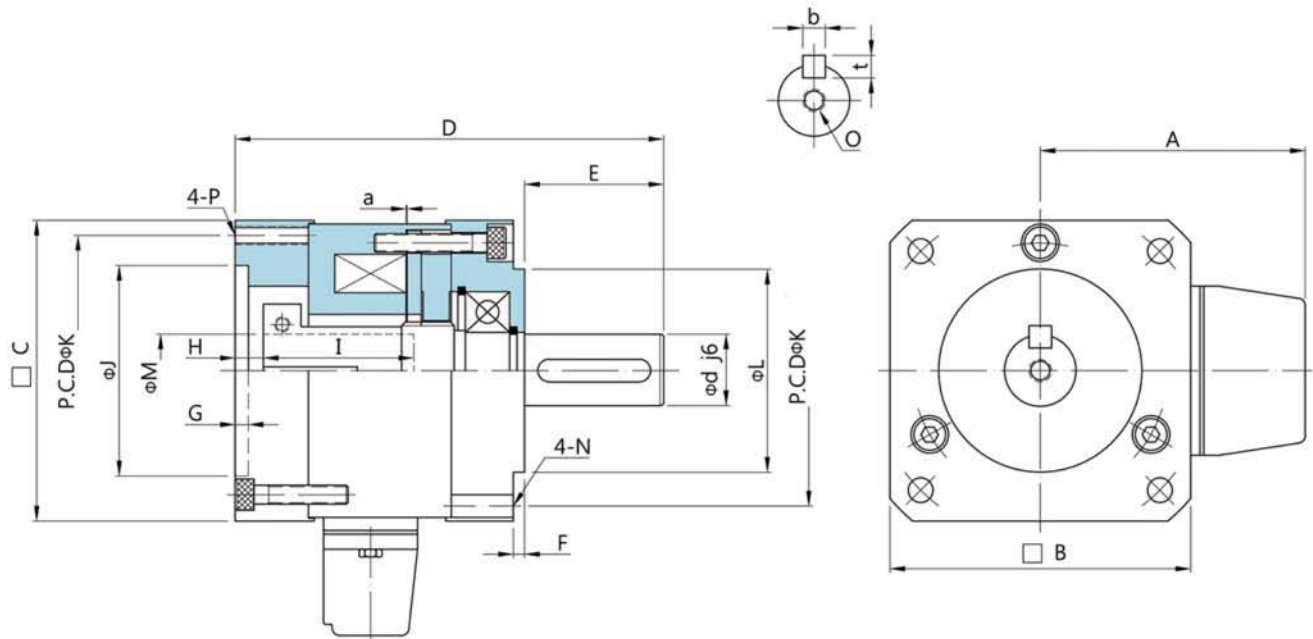


Brake Construction for TMP-



Dimensions in mm.

SIZE		60-A	80-A	130-B	130-A	176-A
Static Torque	kgm	0.25	1.0	2.2	2.2	5
Voltage	DC-V	24	24	24	24	24
Capacity	(at 20°C)W	12.5	18	26	26	34
Shaft Dia	d j6	14	19	22	24	35
Shaft keyway	bxt	5x5	6x6	8x7	8x7	10x8
Length	A	62.5	70.5	95.5	95.5	116.5
	B	60	80	130	130	176
	C	60	80	130	130	176
	D	91	114	134	134	184.5
	E	30	37	50	50	75.5
	F	3	3	3	3	3
	G	3.5	3.5	6.5	6.5	5
	H	5	7.5	7.25	7.25	6.5
	I	32	40	52	52	75
Diameter	J	50	70	110	110	114.3
	K	70	90	145	145	200
	L	50	70	110	110	114.3
	M	14	19	22	24	35
	N	5.5	6.5	9	9	13
	O	M5	M6	M8	M8	M10
	P	M5	M6	M8	M8	M12
Gap	a	0.2	0.2	0.2	0.2	0.2
Weight	kg	0.83	1.61	4.56	4.56	11.55