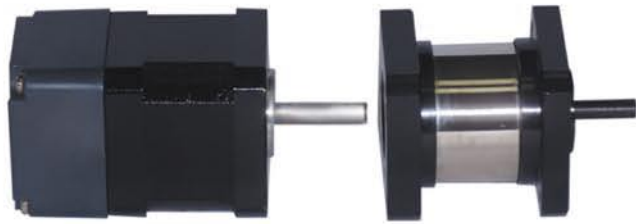


Brake Construction for TMP-0.1



TMP - 0.1 system

TMP-0.1-42, 56, 60, 86

- Safe brake systems for gravity loaded axes.
- Modular safety brake system for a mounted stepper motor on the A-bearing side.
- Safe braking on emergency OFF and power failure.
- Sealed brake housing prevents penetration of lubrication.
- Short, compact design, low weight.
- Conform to ROHS requirement.

